

The Birds and the Beads

Fall 2009 Class Schedule

www.thebirdsandthebeads.com • 732-591-8233

All samples are available for viewing at the shop and there are full-color pictures on our website. Supply lists are available upon registration. Unless stated otherwise, materials are not included in class fee. SUPPLIES MUST BE PURCHASED WELL BEFORE YOUR CLASS DATE.



Bangladesh Bracelet with Brooke Innocenti

10/28 Wed. 10-3pm Fee: \$55

Create this textured bracelet that has luscious fringe around the crystal button that becomes a focal embellishment as well as a clasp. *Prerequisite:*

knowledge of peyote stitch.



Byzantine Bracelet with Barb

11/5 Thu. 10-1pm & 6:30-9:30pm

Fee: \$35
This form of chainmaille is a terrific way to get started. It looks complicated, but is quite simple and fun! *Prerequisite: experience with pliers.*

Birthstone Bracelet with Sandra Lupo

10/27 Tue. 6:30-9:30pm

Fee: \$35

Sandy will show you how to create this original design Birthstone Bracelet – a perfect personalized gift – with sterling silver or gold-filled wire and Swarovski crystals. You'll be wire-wrapping with pliers to make this chain-like crystal bracelet. *Earring workshop or experience with pliers.*



Calypso Cuff with Susan Eisemann

10/18 Sun. 1:30-6:30pm

Fee: \$55

You will be sure to get many complements on this striking bracelet. It is an interesting mix of delicats, pearls, 15's and crystals done in a modified RAW. We will build up on a base and then embellish with crystals. *Intermediate/ Advanced - Students must be able to RAW without assistance.*



Bougainvillea Boutique with Karyn

Fee: \$35

10/27 Tue. 10-1pm

10/29 Thu. 6:30-9:30pm

Combine a mix of seed beads & petite shapes with fine gauge

wire in a simple twist technique that mimics a flowering vine. The result is a delicate necklace as unique & charming as you'd discover in a fine boutique. *Beginner.*



Calypso Ruffle with Mychelle Kendrick

11/18 Wed. 5:30-9:30pm

Fee: \$45

Add two new techniques to your beading repertoire. A deceiving bracelet that will teach you netting and right angle weave (RAW). Great for anyone with even a little bead-weaving experience.

But Wait, There's More with Barb

11/13 Fri. 10-2pm & 6-10pm Fee: \$45

Not One... Not Two... But Three Spirals for the price of one class. Call within the next 10 minutes to be eligible for bonus Tips and Techniques. This exclusive offer is valid for all beaders to expand their spiral skills. *All levels.*

Caterpillar Bracelet with Barb

12/1 Tue. 6:30-8:30pm

12/2 Wed. 10-12pm

Fee: \$25

Use up your stash of beads or start from scratch to create a one of a kind fringe bracelet. *All levels.*



Catch of the Day with Barb

10/28 Wed. 6:30-9:30pm

10/29 Thu. 10-1pm

Fee: \$35

Learn netting stitch to catch a cabochon or a donut. Peek-a-boo design captures and frames your rock beautifully. *Intermediate. Off-loom experience required.*



Crystal Helix Bracelet with Barb

11/11 Wed. 6:30-9:30pm

11/18 Wed. 10-1pm

Fee: \$35

This classic woven design goes one step further for a totally different look, thanks to Donna and Barb. You'll work with our beloved 4mm crystals (AB and 2X colors are stunning) and walk away with a beautiful, sparkling bracelet. *All levels.*



Chainmaille with a Twist with Barb

12/16 Wed. 10-1pm & 6:30-9:30pm

Fee: \$35

Add a new dimension to your chainmaille. Twisted rings bring extra elegance to a rosette link. *All levels.*

Christmas Tree Bracelet with Brooke Innocenti

10/23 Fri. 10-2 or 11/10 Tue. 6-10pm

Fee: \$45

Create six Christmas trees with peyote stitch to make this festive bracelet. Embellish with seed beads for decoration with a crystal star at the top of each tree. *Basic peyote knowledge preferred.*

Crimping 101 with Barb

10/8 Thu.

10-11:30am & 6:30-8pm

Fee: \$25 (includes partial kit)

Graduate from an elastic bracelet to a long-lasting, secure piece of jewelry. You'll design two bracelets and learn to use the crimping plier. *Beginner.*



Double Lattice with Sandra Lupo

11/17 Tue. 6:30-9:30pm

Fee: \$35

Enjoy making this versatile double chainmaille pattern in Sterling Silver and then string a favorite pendants and complementing stone strand of beads and accents. You will benefit as well from the instruction for finishing the necklace with flexible stringing wire, clasp, crimps, and findings that offer a professionally finished look. *All levels.*

Drop Edge with Barb

10/22 Thu. 10-1pm & 6:30-9:30pm

Fee: \$35

Learn the basic off-loom square stitch to form this lovely little bracelet with a wonderful teardrop edge running along the sides of the woven bracelet. *Beginner.*



Crochet Cuff with Mychelle Kendrick

12/9 Wed. 5:30-9:30pm

Fee: \$45

This amazing bracelet is easy to wear, fast to finish, and rewarding to make. Your

choice of colors and beads makes them a one-of-a-kind masterpiece. You might just have to make one in every color! *Beginner crocheter.*

Dutch Spiral with Mychelle Kendrick

12/2 Wed. 6-9pm

Fee: \$35

Learn the construction of a classic, swirly Dutch Spiral. Create a bead, a section to float, or an entire necklace – the choice is yours. Variations and color combination are endless. *Basic peyote knowledge helpful.*

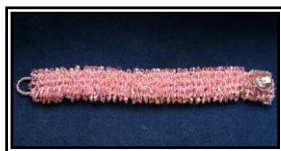
Crystal Cuff with Brooke Innocenti

10/15 Thu. 10-2pm

11/3 Tue. 6-10pm

Fee: \$45

Make this fun, beautiful bracelet by encircling beads in a square stitch base with crystals and seed bead loops. *All levels.*



Earring Workshop

10/7 Wed., 11/12 Thu., 12/4 Fri.

10-11am & 6-7pm

Fee: \$15 *Includes supplies*

A great quick course for learning the basics of making dangle earrings with head pins & jewelry pliers. *Beginner.*



Flat Peyote Bracelet with Barb
10/16 Fri. 10-12:30 & 6:30-9pm
Fee: \$30

Always in demand, learn the basic but essential off-loom weaving stitch. Create a flat strip that can later be completed as a bracelet. You will work with large beads (8/0 size) to allow you to understand how to apply this technique. *Beginner.*

Foxtail Bracelet with Tamara Honaman
12/6 Sun. 1:30-5pm
Fee: \$45

Have fun making this great chain while learning the best way to open and close jump rings and how to best use your tools. This is a challenging chain but something even a beginner can do. *All levels.*



Get Connected with Karyn
10/14 Wed. 6:30-9pm & 10/21 Tue. 10-12:30pm
Fee: \$30

A new bracelet with lots of links to practice your pigtail skills. With a pretty toggle, silver connector pieces, and sparkly beads, you'll want to wear this every day. Warning: everyone will want you to make one for them too! *Earring workshop or experience with pliers.*

Get Spiked Bracelet with Mychelle Kendrick
11/4 Wed. 6-9pm
Fee: \$35

This whimsical bracelet incorporates those fabulous and funky czech daggers and the matching lentils. But your options are endless! *Peyote experience helpful but not necessary.*



The Glitz with Brooke Innocenti
11/19 Thu. 6-10pm
Fee: \$45

Right angle weave (RAW) two or four rows of Swarovski pearls. Embellish with seed beads and crystal of your choice. Fun and

Beautiful. *RAW experience required.*

Gossamer Necklace with Karyn
10/9 Fri 6:30-9:30pm or 11/4 Wed 10-1pm
Fee: \$35

Seed beads and silk thread join together to create a multi-strand necklace as soft and light as a feather.

Learn a sweet and simple stringing technique that is as enjoyable to do as it is to wear. This is a beginner class.



Herringbone Flower with Tamara Honaman
10/4 Sun. 10-4pm
Fee: \$65

Create these colorful and eye-catching flowers which can be used as a pendant, earrings, tassels - you choose! In class we will cover the nuances of Tubular Herringbone, the use of color and textures, as well as how to assemble the final stacked design.

Kumihimo Beaded Bracelet with Jill Hurant
10/13 Tue. 6:30-9:30pm or 10/20 Tue. 10-1pm
Fee: \$35

Kumihimo is the ancient art of Japanese braiding. Learn the basic braiding technique using yarn and/or rattail and then use the technique to create a braided rope bracelet using c-lon and beads. *All levels.*

Look Ma, No Clasp with Karyn
11/17 Tue. 10-11:30am
12/17 Wed. 6:30-8pm
Fee: \$25

A macramé knot becomes an adjustable clasp with pretty trimmings. *All levels.*



Luminous Bracelet with Barb
11/20 Fri. 10-1pm & 6:30-9:30pm
Fee: \$35

A contemporary look using a traditional technique. Learn the basics of weaving on the loom incorporating seed beads and 4mm glass beads. *All levels.*



M&M Wire Woven Cuff with Mychelle Kendrick
10/21 Wed. 5:30-9:30pm
Fee: \$45

Loaded with Swarovski crystals and pearls, this bracelet is over the top. Combine anything and everything you can fit on wire and you will have a stunning, one-of-a-kind wirework bracelet. No two are alike. *No wire experience necessary.*



Metal Mania Charms! With Tamara Honaman
12/13 Sun. 10-3pm
Fee: \$65

Explore working with metal and some great tools while you create unique charms to add to any chain. Stamping, riveting, forming, and more!

Metal Fringe Earring with Barb
12/10 Thu. 10-1pm

12/15 Tue. 6:30-9:30 pm Fee: \$35

If repetition is the best way for you to learn, then this is the class for you to perfect your wrapped loop technique. Mix or match your metals for a great go-to earring. *Earring workshop or experience with pliers.*



Not So Heavy Metal Band with Barb
Fee: \$35

11/24 Tue. 10-1 & 6:30-9:30pm

Link jump rings together to weave a supple, metal cloth-like bracelet. A traditional chainmaille with a little contemporary bling *Earring*

workshop or experience with pliers.

Perfectly Appropriate with Susan Eisemann

10/4 Sun. 1:30-6:30pm Fee: \$60

The design of this bracelet showcases a repeating design of tiny seed beads that create a double frame to support the embellishment of pearls and firepolish beads. Students should have a working knowledge of the concept of RAW and netting. This is not a RAW stitch but a combination of RAW and netting with embellishment. Students, don't forget your corrective eyewear, we will be working primarily with 14/15 seed beads! *Intermediate-Advanced.*



Perfect Cross with Susan Eisemann
10/18 Sun 10-1pm, 11/15 Sun. 3-6pm
or 11/7 Sat. 3-6pm Fee: \$40

The cross is a perfect size (1 ¼ inch) for teens as well as adults. Done in double sided RAW, it can be hung in a "Y" fashion or strung thru the rabbit ear bail.

If you are searching for the perfect holiday gift with the personal touch for friends and family, look no further here it is! *Intermediate - Students must be able to read a pattern (text or graphics) and RAW without assistance.*



Petite Fleurs Necklace with Susan Eisemann

11/1 Sun. 10-4pm

Fee: \$70

Pablo Picasso's drawing of "Petite Fleurs" is the inspiration for petite

Swarovski crystal flowers making up a spectacular pendant bouquet. The pendant is three-dimensional and could be worked in different colors on the second side for a reversible pendant. *Advanced.*

Rapunzel Lariat with Susan Eisemann

11/8 Sun. 10-4pm

Fee: \$70

Rapunzel, Rapunzel let down your hair. This flowing lariat includes a slide for added pizzazz. RAW encloses freshwater or Swarovski pearls. *Advanced - students must be able to RAW without assistance.*



R.A.W. Beauty with Barb

10/2 Fri. 6:30-10:30pm

10/14 Wed. 10-2pm

Fee: \$45

Right Angle Weave at its most basic level is simply beautiful in this cuff. Learn this challenging but versatile stitch that will open doors to many creative adventures. We will use 4mm Swarovski crystals & pearls to create a cuff that is both sparkly & soft. Add a fabulous clasp to enhance its RAW beauty. *Beginner, some off-loom weaving experience helpful.*

Solar Eclipse Necklace with Susan Eisemann

10/25 Sun. 10-4pm

Fee: \$70

The sides are made of repeating RAW medallions embellished with pearls and firepolish beads. The center medallion beaded is the focal point which will light up your face. The back of the necklace is finished with a fancy embellished closure which completes the look. Wear it with a pair of jeans and a tee out food shopping or with your favorite dress to dinner! *Intermediate/Advanced - students must be able to RAW without assistance.*



Swarovski Bangle Bracelet with Susan Eisemann

10/11 Sunday 10- 4pm

Fee: \$65

The four-sided square version or the triangle version - either one is an eye catcher. The crystal bangle is a in a true 3D form that will be customized to fit your wrist. These bracelets look great if you make one or layer them up. Students must be able to RAW without assistance. *Intermediate.*



a great gift for the holidays! *Earring workshop or experience with pliers.*

Note: Metal Mania Charms is scheduled for the week after this class – sign up for both and add charms to your bracelet!

Wonderful Wire with Sandra Lupo

10/6 Tue. AND 10/20 Tue. 6:30-9:30pm (2 sessions)

Fee: \$75

Understand wire versatility for wrapping beads, making dangles, clasps, ear wires, cages, & finger rings. Learn how wire working tools transform wire into spiraled, twisted, coiled, and hammered jewelry components. A must for aspiring jewelry makers! *Prerequisite - Earring Workshop preferred in this ALL LEVELS class.*



Unlock Your Soul Necklace with Susan Eisemann

11/22 Sun. 10-4pm

Fee: \$70

Designed after a vintage skeleton key, the focal key medallion can be worn long or short. So, add

layers of shorter beaded or chain necklaces from your jewelry collection to complete the look. *Advanced - students must be able to read a pattern (text or graphics) and RAW without assistance.*

Vintage Lace Bracelet with Barb

12/8 Tue. 6:30-9pm & 12/9 Wed. 10-12:30pm

Fee: \$30

Weave a delicate bracelet using small seed beads and Swarovski crystals in a feminine and lacey pattern. *All levels.*



Zee Beaded Bead with Karyn

11/11 Wed. 10-12:30pm & 12/3 Thu. 6:30-9pm

Fee: \$30

Have fun with color and make your own beads from seed beads. This is another great class to

learn the peyote stitch. *All levels.*



Water Lily Bracelet with Susan Eisemann

11/15 Sun. 10-2:30pm

Fee: \$55

Monet's famous "Water Lilies" is a scene of lilies

floating on a tranquil pond. Just like Monet, make your own work of art, a bracelet embellished with three-dimensional water lilies floating on your wrist. *Intermediate/Advanced - students must be able to RAW without assistance.*

Wireworked Chain with Tamara Honaman

12/6 Sun. 10-1pm

Fee: \$45

Create a unique chain using 16-gauge sterling silver round wire. In the workshop we will review the tools and the proper way to use them so creating these links is a snap. This will make



- Payment is required in full to guarantee your space. Class size is limited
- Payment may be transferred to another class up to one week before the class, less a \$5 fee.
- Payment is refundable up to one week before the class, less a \$5 Fee.
- No refunds for cancellations one week or less before class or for "no- shows"
- Full refund is issued for any classes cancelled by The Birds and the Beads.
- Prices subject to change without notice. The Birds and Beads is not responsible for misprints or typing errors.

HINT: Register early or the class may be cancelled the week before if there is not adequate sign-up.

The Birds and the Beads

Fall 2009 Class Schedule

www.thebirdsandthebeads.com • 732-591-8233

October

10/2 Fri.	R.A.W. Beauty	6:30-10:30pm	11/7 Sat.	Perfect Cross	3-6pm
10/4 Sun.	Herringbone Flower	10-4pm	11/8 Sun.	Rapunzel Lariat	10-4pm
10/4 Sun.	Perfectly Appropriate	1:30-6:30pm	11/10 Tue.	Christmas Tree Bracelet	6-10pm
10/6 Tue.	Wonderful Wire I	6:30-9:30pm	11/11 Wed.	Zee Beaded Bead	10-12:30pm
10/7 Wed.	Earring Workshop	10-11am & 6-7pm	11/11 Wed.	Crystal Helix Bracelet	6:30-9:30pm
10/8 Thu.	Crimping 101	10-11:30am & 6:30-8pm	11/12 Thu.	Earring Workshop	10-11am & 6-7pm
10/9 Fri.	Gossamer Necklace	6:30-9:30pm	11/13 Fri.	But Wait, There's More	10-2pm & 6-10pm
10/11 Sun.	Swarovski Bangle	10-4pm	11/15 Sun.	Water Lily Bracelet	10-2:30pm
10/13 Tue.	Kumihimo Bracelet	6:30-9:30pm	11/15 Sun.	Perfect Cross	3-6pm
10/14 Wed.	R.A.W. Beauty	10-2pm	11/17 Tue.	Look Ma, No Clasp	10-11:30am
10/14 Wed.	Get Connected	6:30-9pm	11/17 Tue.	Double Lattice	6:30-9:30pm
10/15 Thu.	Crystal Cuff	10-2pm	11/18 Wed.	Calypto Ruffle	5:30-9:30pm
10/16 Fri.	Flat Peyote Bracelet	10-12:30pm & 6:30-9pm	11/18 Wed.	Crystal Helix	10-1pm
10/18 Sun.	Perfect Cross	10-1pm	11/19 Thu.	The Glitz	6-10pm
10/18 Sun.	Calypto Cuff	1:30-6:30pm	11/20 Fri.	Luminous Bracelet	10-1 & 6:30-9:30
10/20 Tue.	Kumihimo Bracelet	10-1pm	11/22 Sun.	Unlock Your Soul Necklace	10-4pm
10/20 Tue.	Wonderful Wire II	6:30-9:30pm	11/24 Tue.	Not So Heavy Metal Band	10-1pm & 6:30-9:30

December

10/21 Tue.	Get Connected	10-12:30pm	12/1 Tue.	Caterpillar Bracelet	6:30-8:30pm
10/21 Wed.	M&M Wire Woven Cuff	5:30-9:30pm	12/2 Wed.	Caterpillar Bracelet	10-12pm
10/22 Thu.	Drop Edge	10-1pm & 6:30-9:30pm	12/2 Wed.	Dutch Spiral	6-9pm
10/23 Fri.	Christmas Tree	10-2pm	12/3 Thu.	Zee Beaded Bead	6:30-9pm
10/25 Sun.	Solar Eclipse Necklace	10-4pm	12/4 Fri.	Earring Workshop	10-11am & 6-7pm
10/27 Tue.	Bougainvillea Boutique	10-1pm	12/6 Sun.	Wireworked Chain	10-1pm
10/27 Tue.	Birthstone Bracelet	6:30-9:30pm	12/6 Sun.	Foxtail Bracelet	1:30-5pm
10/28 Wed.	Bangladesh Bracelet	10-3pm	12/8 Tue.	Vintage Lace Bracelet	6:30-9pm
10/28 Wed.	Catch of the Day	6:30-9:30pm	12/9 Wed.	Vintage Lace Bracelet	10-12:30pm
10/29 Thu.	Catch of the Day	10-1pm	12/9 Wed.	Crochet Cuff	5:30-9:30pm
10/29 Thu.	Bougainvillea Boutique	6:30-9:30pm	12/10 Thu.	Metal Fringe Earring	10-1pm
			12/13 Sun.	Metal Mania Charms!	10-3pm
			12/15 Tue.	Metal Fringe Earring	6:30-9:30 pm
			12/16 Wed.	Chainmaille with a Twist	10-1pm & 6:30-9:30
			12/17 Wed.	Look Ma, No Clasp	6:30-8pm

November

11/1 Sun.	Petite Fleurs Necklace	10-4pm
11/3 Tue.	Crystal Cuff	6-10pm
11/4 Wed.	Gossamer Necklace	10-1pm
11/4 Wed.	Get Spiked Bracelet	6-9pm
11/5 Thu.	Byzantine Bracelet	10-1pm & 6:30-9:30pm